



# INDOFINE Chemical Company, Inc.

121 Stryker Lane, Bldg. 30, Suite 1 • Hillsborough, NJ 08844 • U.S.A.

Phone: (908) 359-6778 • FAX: (908) 359-1179

website: [www.indofinechemical.com](http://www.indofinechemical.com)

e-mail: [chemical@indofinechemical.com](mailto:chemical@indofinechemical.com)

## CERTIFICATE OF ANALYSIS

Catalog Number: 19-224

Product Name: **6,7-DIETHOXY-4-METHYLCOUMARIN**

CAS Number: [314744-06-4]

Lot Number: 99282

Chemical Formula: C<sub>14</sub>H<sub>16</sub>O<sub>4</sub>

Molecular Weight: 248.28

Melting Point: 99-101°C

Appearance: Off white powder

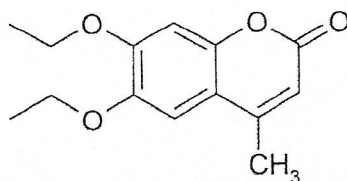
Solubility: Soluble in Chloroform

TLC: Hexane: Ethyl acetate (7:3)

NMR Spectrum: Enclosed (Conforms to the structure)

Storage: Store in a cool, dry place

Purity(HPLC): 99.70%





# INDOFINE Chemical Company, Inc.

121 Stryker Lane, Bldg. 30, Suite 1 • Hillsborough, NJ 08844 • U.S.A.

Phone: (908) 359-6778 • FAX: (908) 359-1179

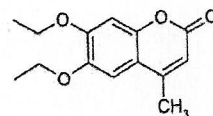
website: [www.indofinechemical.com](http://www.indofinechemical.com)

e-mail: [chemical@indofinechemical.com](mailto:chemical@indofinechemical.com)

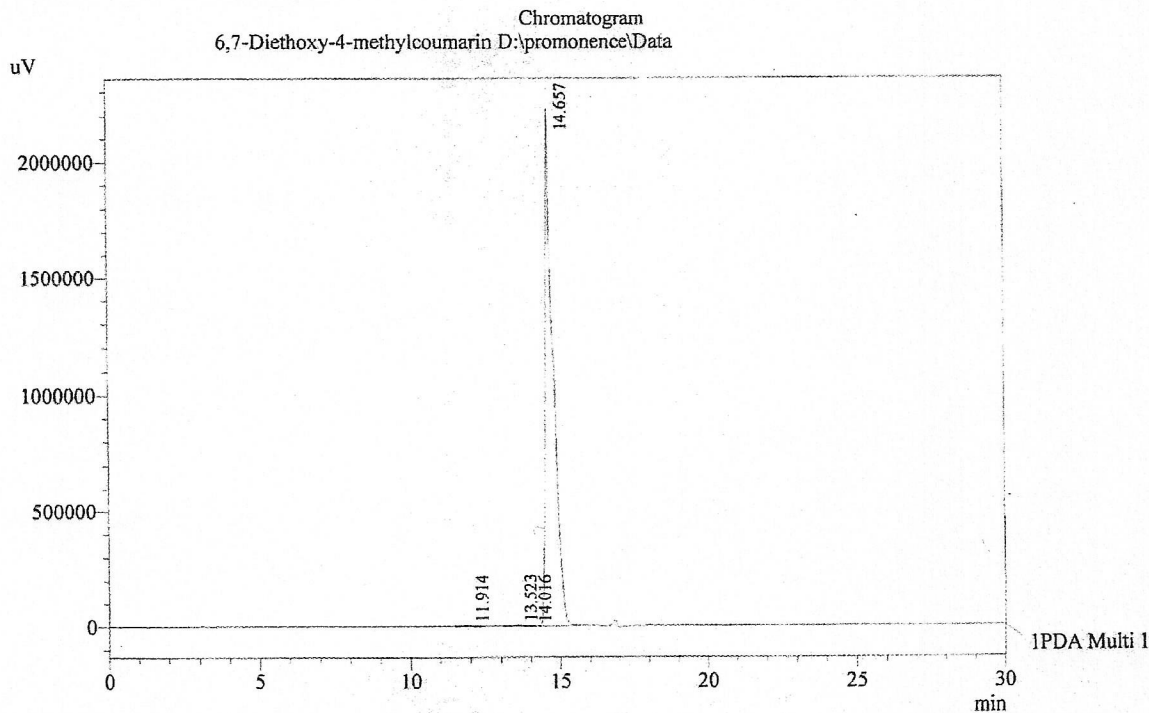
## HPLC ANALYSIS

Acquired by : Sanjeev  
Sample Name : 6,7-Diethoxy-4-methylcoumarin  
Sample ID : Lot No: 99282  
Injection Volume : 20 uL  
Data Filename : 020314M.lcd  
Method Filename : Linear Gradient.M.lcm

Catalog No.: 19-224  
Product Name: 6,7-Diethoxy-4-methylcoumarin  
Lot No.: 99282



Column : LUNA C-18(2), (250mm x4.6mm 5.0μ)  
Flow : 1.000 mL/min.  
Mobile Phase : A(0.05% TFA in water) B(Acetonitrile)  
0.01 90 10  
12.0 10 90  
20.0 10 90  
23.0 90 10  
30.0 90 10  
Diluent : Acetonitrile



1 PDA Multi 1 / 230nm 4nm

PeakTable

PDA Ch1 230nm 4nm

Peak#	Name	Ret. Time	Area	Area %	Relative Retention Time
1	RT:11.914	11.914	27705	0.07	0.81
2	RT:13.523	13.523	85484	0.21	0.92
3	RT:14.016	14.016	4263	0.01	0.96
4	6,7-Diethoxy-4-methylcoumarin	14.657	39648506	99.70	1.00
Total			39765959	100.00	



# INDOFINE Chemical Company, Inc.

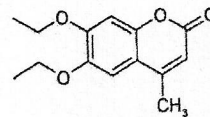
121 Stryker Lane, Bldg. 30, Suite 1 • Hillsborough, NJ 08844 • U.S.A.

Phone: (908) 359-6778 • FAX: (908) 359-1179

website: [www.indofinechemical.com](http://www.indofinechemical.com)

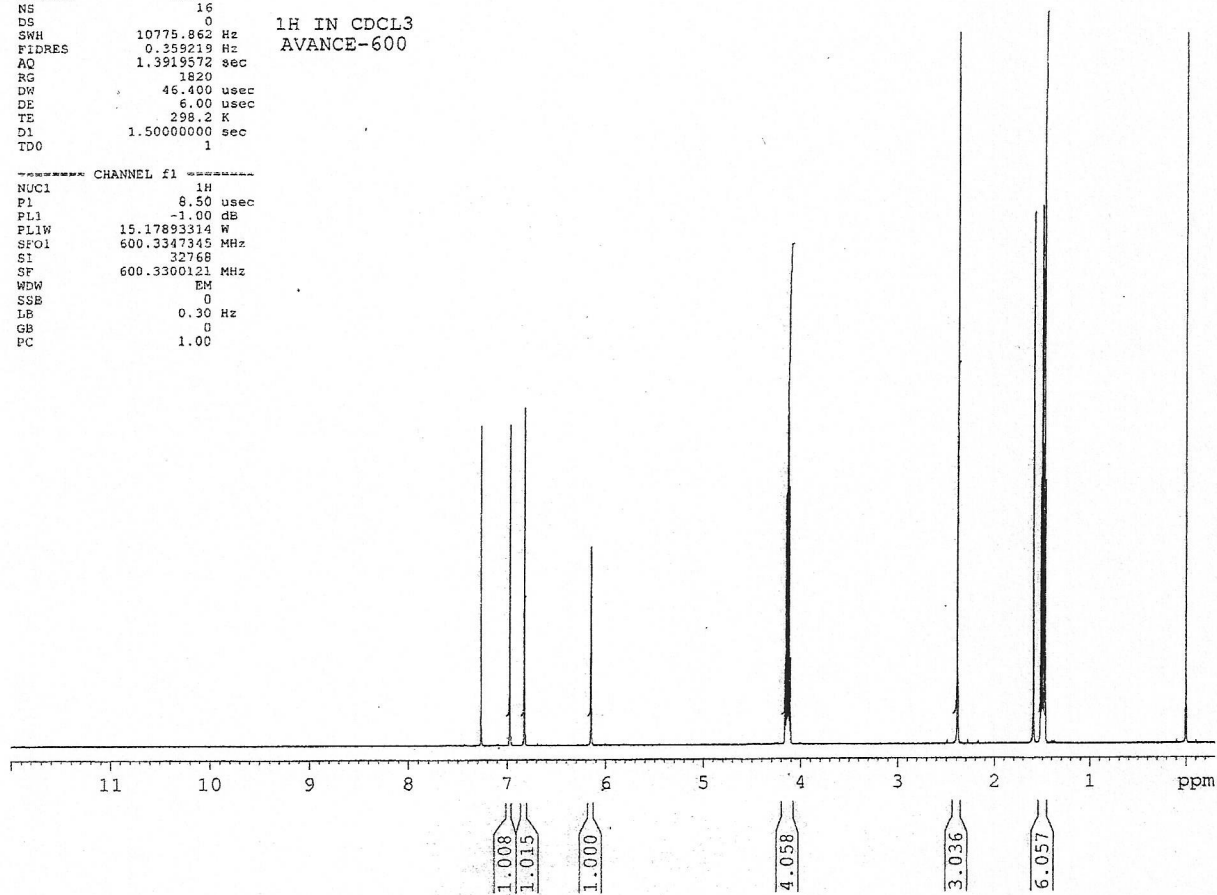
e-mail: [chemical@indofinechemical.com](mailto:chemical@indofinechemical.com)

Catalog No.: 19-224  
Product Name: 6,7-Diethoxy-4-methylcoumarin  
Lot No.: 99282



SOLVENT CDCl3  
NS 16  
DS 0  
SWH 10775.862 Hz 1H IN CDCl3  
FIDRES 0.359219 Hz AVANCE-600  
AQ 1.3919572 sec  
RG 1820  
DW 46.400 usec  
DE 6.00 usec  
TE 298.2 K  
D1 1.50000000 sec  
TDO 1

----- CHANNEL f1 -----  
NUC1 1H  
P1 8.50 usec  
PL1 -1.00 dB  
PL1W 15.17893314 W  
SFO1 600.3347345 MHz  
S1 32768  
SF 600.3300121 MHz  
WDW EM  
SSB 0  
LB 0.30 Hz  
GB 0  
PC 1.00





# INDOFINE Chemical Company, Inc.

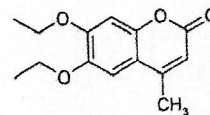
121 Stryker Lane, Bldg. 30, Suite 1 • Hillsborough, NJ 08844 • U.S.A.

Phone: (908) 359-6778 • FAX: (908) 359-1179

website: [www.indofinechemical.com](http://www.indofinechemical.com)

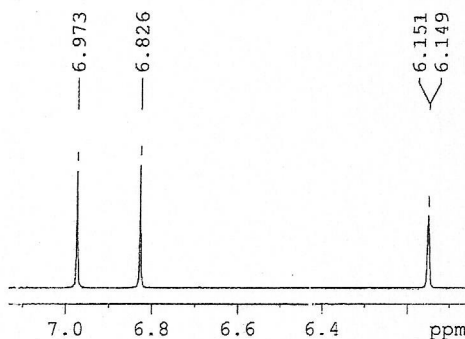
e-mail: [chemical@indofinechemical.com](mailto:chemical@indofinechemical.com)

Catalog No.: 19-224  
Product Name: 6,7-Diethoxy-4-methylcoumarin  
Lot No.: 99282



SOLVENT cdcl3  
NS 16  
DS 0  
SWH 10775.862 Hz  
FIDRES 0.359219 Hz  
AQ 1.3919572 sec  
RG 1820  
DW 46.400 usec  
DE 6.00 usec  
TE 298.2 K  
D1 1.5000000 sec  
TD0 1

1H IN CDCL3  
AVANCE-600



----- CHANNEL f1 -----  
NUC1 1H  
P1 8.50 usec  
PL1 -1.00 dB  
PL1W 15.1789334 W  
SFO1 600.3347345 MHz  
SI 32768  
SF 600.3300121 MHz  
WDW EM  
SSB 0  
LE 0.30 Hz  
GB 0  
PC 1.00

4.164  
4.153  
4.141  
4.130  
4.118  
4.106

1.594

1.520  
1.509  
1.497  
1.493  
1.482  
1.470

